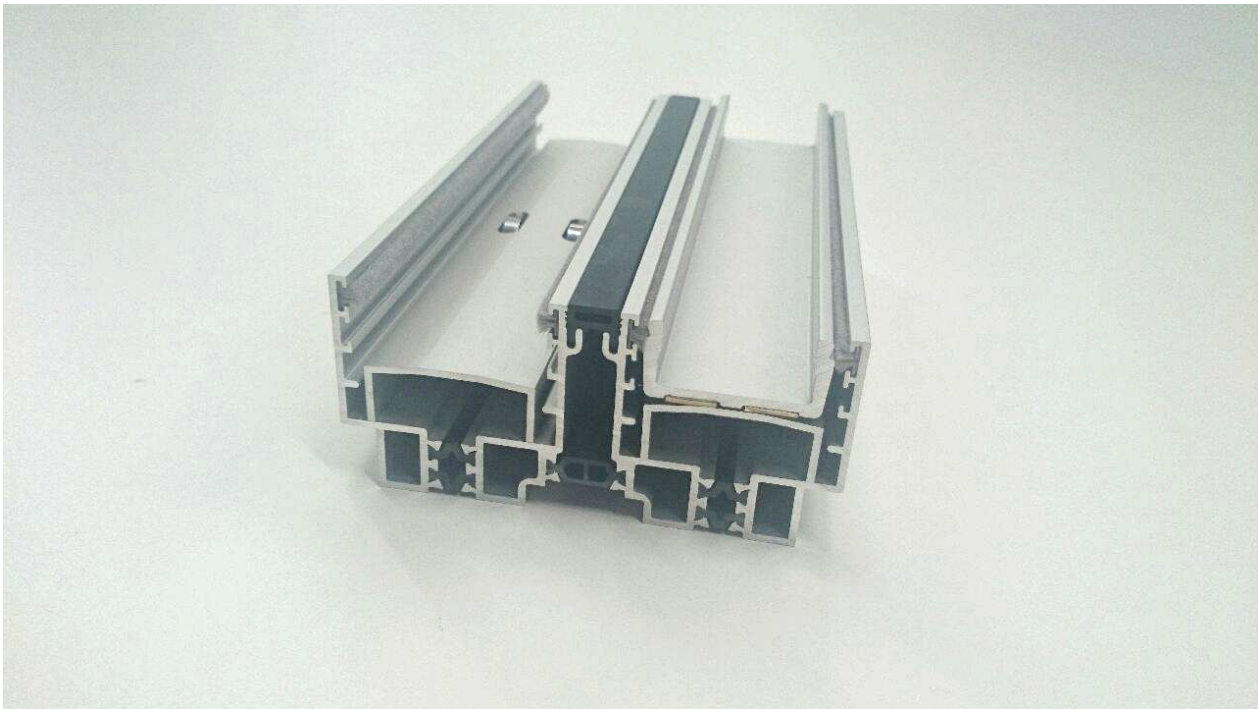


## V32 range

### Product information

We have brought out a new V32 range with thermal reinforcement and a glass fibre profile. This range is designed for standard fixed-sliding openings.



### SPECIFICATIONS

#### Rail + Frames

Embedded and concealed in the floor, wall and ceiling  
Frame just 124 mm wide (birails; monorail: 56 mm + 12 mm seal)  
Saline treatment specially adapted for coastal projects

#### Vertical connection

23 mm  
Reinforced for very windy locations or installation at high altitudes  
Optimised heat retention with fibreglass towers

#### Glazing

32 mm  
Up to 12 m<sup>2</sup> (4x3 m), vertical or horizontal

#### Closure mechanism

Two-point closure button  
Cylinder  
Range of options for electric closure  
Alarms

#### Configuration

Sliding (up to 12 m<sup>2</sup>)  
Fixed (up to 12 m<sup>2</sup>)  
Opening angle  
Pocket

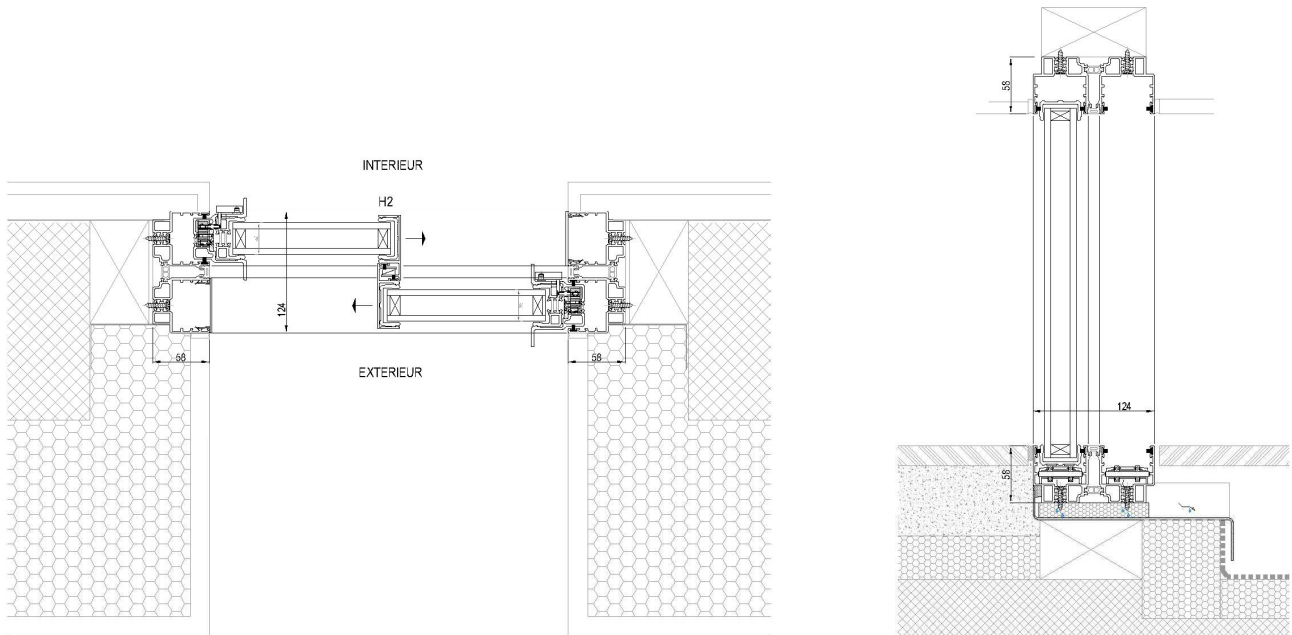
#### Finishes

Natural or coloured 25-micron anodised aluminium alloy, version with thermal varnish in a very wide range of colours

### Drainage chamber

The frames drain vertically, with the rainwater being collected in a stainless steel chamber. This chamber is equipped with drainage foam to protect against the pressure of the wind. It also houses PVC support components which distribute the loads (weight of the glazing) across the concrete structure.

### Main cross sections



### Value U calculated in accordance with standards EN ISO 10077-1 and -2

